

## VDH SHEET PILER – HYDRAULIC TELESCOPIC MAST

The VDH Sheet Piler is a versatile sheet pile driving machine, suitable for vibrating and pressing various types of sheet piles. The biggest difference compared to the traditional method of installing sheet piles – with a crane and vibratory hammer – is that this machine can also provide compressive prestress on the sheet piling, which increases efficiency.

### HYDRAULIC TELESCOPIC MAST

In total, the hydraulic telescopic mast can extend up to 5 metres. Two additional mast sections have been fitted to provide a maximum pin height of 23,440 mm. This allows longer sheet piles to be installed, with a maximum length of 21 metres and a weight of 3,750 kg. It is also possible to work closer to the machine. When there is limited working space (projects in the city centre) or when work has to be done from a pontoon (hydraulic engineering works), this offers great advantages. The machine's undercarriage can be hydraulically widened to a maximum outer dimension of 5 metres, which provides extra stability during the work. The VDH Sheet Piler is also available with a four-section mast.

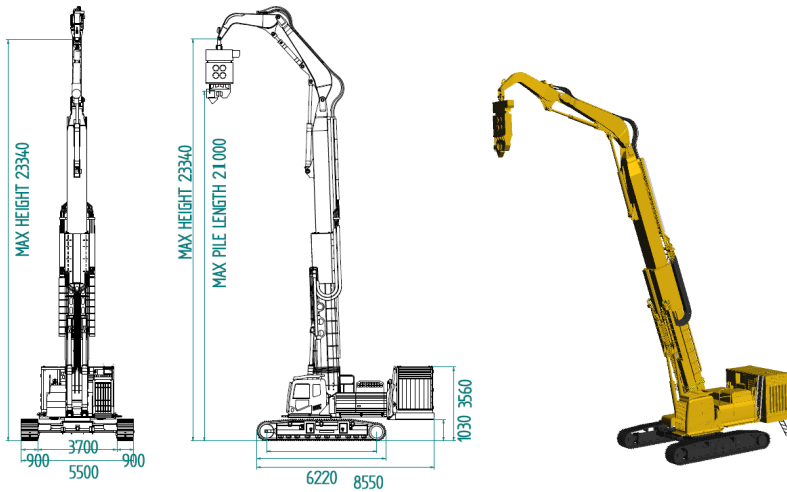
### HYDRAULICALLY DEMOUNTABLE POWER PACK

In place of the original ballast weight, Van den Heuvel has developed a special weighted frame, on which the power pack is placed. Hydraulic cylinders at the back of the frame make it easy to remove the power pack. This reduces the transport weight, for cost-efficient transport. The power pack with frame also serves as a counterweight. Depending on the machine's power rating, Van den Heuvel gives you the choice of a separate power pack and separate vibratory hammer. This ensures that the latest requirements can always be met. The combination in which the drive runs via the vibratory hammer provides optimum performance. All VDH machines in production today are powered by a Stage V engine.

### VERSATILE POWERHOUSE

With a maximum height of approximately 23 metres and a weight of 71,000 kg, the VDH Sheet Piler is a true powerhouse. The machine is phenomenal in terms of its lifting chart: with the mast fully extended, the crane can still lift 3,750 kg at its maximum radius of 21 metres. This is in addition to the vibratory hammer, which weighs approximately 4,400 kg. This sheet piler, which was developed by Van den Heuvel in-house, can be modified to meet the customer's requirements. For example, the machine is optionally available with a tilting cabin, so the operator has a better view of the work during pulling or placing sheet piling, which improves safety. The machine is CE certified, carefully tested by Aboma and approved for use as a foundation piling machine (NEN-EN 16228).





### BENEFITS OF THE VDH SHEET PILER – HYDRAULIC TELESCOPIC MAST:

- Quick, efficient sheet pile driving
- Suitable for sheet piles up to 21 metres long (max. weight 3,750 kg)
- 5-metre extendable telescopic mast
- Compressive prestress on sheet piling
- Hydraulically demountable power pack
- Hydraulically adjustable undercarriage
- Compact during transport (35 metres by 13.5 metres)
- CE certified and compliant with foundation standard

All VDH machines are extensively and carefully tested and approved prior to delivery, are of the highest quality and meet the applicable standards. Van den Heuvel also provides maintenance and service for all the machines.



### READY FOR THE FUTURE

Van den Heuvel designs, modifies and builds various types of high-quality machines for special applications. VDH is therefore a successful partner in the foundation sector. Production and modification take place entirely in-house, using state-of-the-art equipment, with expertise developed over many years. Everything is taken care of for the customer throughout the process, from the initial request to delivery of the machine, service and maintenance. Custom solutions result in perfect basic machines, which can be adapted to the needs of the customer or project.

